

ANNUAL REPORT

2011-2012



Centre d'amitié
autochtone
de Val-d'Or



Val-d'Or Native
Friendship
Centre



For three years I have served as President of the Friendship Centre Board of Directors; I have also sat on the Board for a much longer time. I've had the great pleasure of spending time with committed as Director volunteers and employees, including the Executive Director. I have always been a user of the Centre's services. When it occupied its first building on 3rd Avenue, I would often stop there to rest and meet with my brothers and sisters of the First Peoples, sheltered from a city that wasn't always favorable to us at that time. Times have changed, but our Friendship Centre still remains a haven and meeting place within the heart of the city.

Through time, I've had the privilege of spending time with community members during annual general meetings, a privileged space for expression and democracy for an organization like ours and hearing them express their dreams and needs. The members' wishes give us a direction and have led us to great accomplishments over the years. This is how the Abinodjic-Miguam Early Childhood Centre was created in 2003, to meet the needs for places in culturally-adapted daycare, where Aboriginal and non-Aboriginal children can coexist in harmony.

This year, we see the accomplishment of another great dream issued by the community during an annual general meeting a few years ago. This dream has been simmering in our red hearts for a long time... that of having a cultural site in a natural setting. Even though certain steps remain to be taken, this dream, which is especially dear to me, takes shape with the acquisition of the Scout Camp, thanks to the support of the Kinsmen Club, on the shores of Lake Lemoyne, a lake that the Anishinabeg called "Kakinokamak", or "Long Lake".

Last March, my heart filled with joy when I found out about the holding of the first traditional family day bringing together children and elders, in a place that is finally ours. With this accomplishment, we prove to our youth that it is possible to dream out loud without limits, to shape the future that we desire!

To all those who, during the year, take part in our collective dream: employees, board members, partners, Aboriginal community members and the population of Val-d'Or, I say:

Kitci Meegwetci!

Oscar Kistabish
PRESIDENT

WORD FROM THE PRESIDENT



In the heart of our community, we have the Val-d'Or Native Friendship Centre. Every day, the First People's cultural, community and social identity is expressed here, with its wealth and diversity. At the Centre, a collective action takes place which encourages verbal expression, supports action and generates decision-making that engages the Aboriginal community of Val-d'Or in a social transformation.

This collective action is based on a grassroots mobilization that takes shape within a project for the development of an urban Aboriginal society. This society project is taking shape thanks to numerous community initiatives brought forward by our people, these youth, elders, men and women who make our Friendship Centre's heart beat.

How does our society project play out? First of all, the project is reflected through its fundamental values such as inclusion, solidarity and equity. These values guide our actions and anchor our social project within our community. For this project to have a direction that can be taken collectively, each person must be able to identify with it and find their place. This is why the construction of such a project is anchored within the mission of the Friendship Centre: improve the quality of life for Aboriginals in Val-d'Or.

What is our society project? Considering that the proximity services offered at the Val-d'Or Native Friendship Centre favour a grassroots mobilization and, considering that these services emphasize our collective action, there is no doubt that this society project will take flight thanks to the active community participation of all those who form our community. Through our initiatives, such as the Minowé Clinic, the Kijaté social housing construction project, the awareness campaign for the elimination of racial discrimination, numerous displays of pride and assertion of identity (Mëmëgwashi school retention gala and National Aboriginal Day) or by the development of a cultural site in a natural setting, we are setting the foundations of a veritable Aboriginal social project in Val-d'Or. We will accomplish this ambitious collective project by sharing our vision of a fairer and more just society that leaves room for diversity without discrimination.

Before this social challenge, it is not at all pretentious to draw hope from the words of the famous hero and revolutionary, Che Guevara: "Let's be realistic and achieve the impossible!"...

Edith Cloutier
EXECUTIVE DIRECTOR

WORD FROM THE EXECUTIVE DIRECTOR



MISSION

The Val-d'Or Native Friendship Centre is an urban service hub, a living environment and a cultural anchor for First Peoples dedicate to wellness, justice and social inclusion, it promotes harmonious cohabitation in its community.



VISION

The Val-d'Or Native Friendship Centre, leader of a committed Aboriginal civil society, actively contributes to the social, community, economic and cultural development of its community through innovative and proactive strategies.



VALUES

At the Friendship Centre, programming and service delivery are based on human values of commitment, respect, integrity and solidarity.



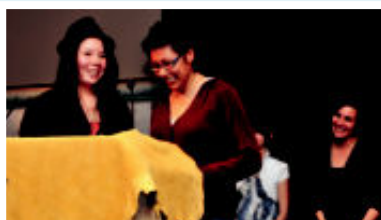
TURNED TOWARDS THE FUTURE: OUR MAJOR PROJECTS

- SOCIAL HOUSING - KIJATE
- FIRST NATIONS SERVICE CENTRE
- MINOWE CLINIC PHASE II
- MIKANAKE SKILLS DEVELOPMENT CENTRE
- CULTURAL SITE
- CONSOLIDATION OF A "RESEARCH AND EVALUATION" COMPONENT IN COLLABORATION WITH THE COMMUNITY-UNIVERSITY RESEARCH ALLIANCE (CURA)



THE MÉMÉGWASHI GATA AND THE 2012 AGENDA

HONOUR THE
ACADEMIC
PERSEVERANCE OF
182 ABORIGINAL
STUDENTS.



IN VAL-D'OR, WE CELEBRATE DIFFERENCES!

NATIONAL ABORIGINAL DAY:

1,200 PEOPLE GATHERED FOR A BIG
OUTDOOR SHOW WHERE TRADITIONAL
AND CONTEMPORARY, ABORIGINAL AND
NON-ABORIGINAL ARTS CELEBRATE THE
MAGIC OF DIVERSITY!



THE 12TH AWARENESS WEEK FOR THE ELIMINATION OF RACIAL DISCRIMINATION

WAS ENHANCED BY THE INVOLVEMENT OF COMMITTED
PARTNERS, INCLUDING THE EDUCATIONAL MILIEU AND
THE VAL-D'OR CHAMBER OF COMMERCE.

- Salomé McKenzie, Chief of the Conseil de la Première Nation anishinabe de Lac Simon and Marcel Jolicœur, president of the Chamber of Commerce and Director of business development at Genivar, acted as spokespersons.
- The Gabriel-Commanda Walk broke a record with the participation of 1,500 walkers.
- About a hundred people took part in a business meet-and-greet entitled "Let's row together towards prosperity": conference "The Cirque du Soleil and diversity" followed by "All Val-d'Or is talking about it."



MY HEALTH WITH A CAPITAL H:

THE 8TH PROMOTION OF LIFE WEEK — 330 participants.

Vaccination, discovery of health partners with 22 exhibitors, workshops on themes such as nutrition, blood-borne and sexually transmitted diseases, Tai Chi or traditional teachings, and a meet-and-greet with Samian, are some of the week's activities promoting life, physical activity and access to information.



DURING THE 2011 FEDERAL ELECTION CAMPAIGN, our Centre filled its role as a public citizen's space, and encouraged the exercise of democracy, by receiving candidates and two of the party leaders on its premises. Social issues such as the fight against poverty and social inequality were addressed.



ASSOCIATION WITH THE CARAVANE DU FRAPRU to call for 50,000 social housing units in Quebec during a peaceful protest.

THE FRIENDSHIP CENTRE CONTRIBUTES to an increased presence of Aboriginal realities on the national media scene by participating in several major radio and television programs.

HUMAN RESOURCES

77
FRIENDSHIP CENTRE
EMPLOYEES AS OF
MARCH 31, 2012

42
ABORIGINAL
EMPLOYEES

35
NON-ABORIGINAL
EMPLOYEES

54%
ABORIGINAL
EMPLOYEES

8
TRAINEES

THE MEDICAL TRANSPORT SERVICE ANSWERED 3,723 SERVICE REQUESTS; THIS REQUEST HAS STABILIZED AFTER SEVERAL YEARS OF CONSIDERABLE GROWTH.

ODABI - "OUR ROOTS"

ESSENTIAL SKILLS DEVELOPMENT TRAINING

ODABI offers a socio-vocational training path based on self-reappropriation, identity reinforcement and self-worth development through work. Offered to Aboriginals aged 18 and over, this 16-week program leads to recognized diplomas.

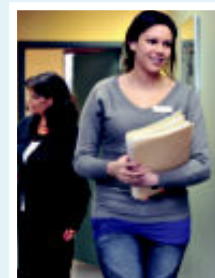
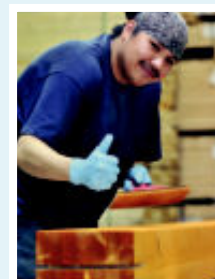
ODABI includes training sessions, traineeships with companies, physical activity, visits to companies and organizations, cultural activities, and allows you to discover urban services available to Aboriginal people.

ODABI aims at developing a mutually beneficial alliance between Aboriginal labour and companies.

12 PARTICIPANTS GRADUATED WITH THE FIRST COHORT (DECEMBER 2011):

- 7 are employed
- 3 went back to school
- 1 is looking for work
- 1 is in an ongoing process

There are 20 participants in the 2nd cohort (June 2012).



MINOWE CLINIC:

THE MINOWE CLINIC, A RESOURCE INTEGRATED IN THE RÉSEAU DE LA SANTÉ ET DES SERVICES SOCIAUX DE LA VALLÉE-DE-L'OR, HAS OPENED FILES FOR 191 DIFFERENT CLIENTS SINCE ITS OPENING IN JANUARY 2011.

The services are for the entire Aboriginal population, pregnant women, children aged 0 to 18 and their families. Among this clientele, the nurse monitored 15 mothers with 25 children aged 0 to 5 within the SIPPE program (Integrated Perinatality and Early Childhood Services), 32 children aged 0 to 5 were vaccinated, and 249 people of all ages received flu shots. Since January, the Clinic has offered services to people suffering from chronic diseases such as diabetes. As for the social worker, he monitored 40 families comprising 120 people.

COMMUNITY DEVELOPMENT SECTOR

Community Development has the mandate of promoting community wellness of the Aboriginal community through dynamic mobilization and appropriation at the collective and individual levels. This empowerment approach is based on accompanying the development of skills, self-esteem and critical consciousness as well as participation, involvement and the creation of networks.

CHILDHOOD COMPONENT 5 - 12 YEARS

MOHIGANECH CLUB "LITTLE WOLVES"

HOMEWORK SUPPORT
89% attendance rate for Francophone and Anglophone groups.
200 hours of homework support.
18 CHILDREN REGISTERED



SOCIAL CLUB 38 CHILDREN TOOK PART

in activities during professional development days.



DAY CAMP 39 CHILDREN REGISTERED

67% attendance rate for 6 weeks of activities.



YOUTH COMPONENT 10 - 29 YEARS OLD

MADJIMÂKWÎN "HOLD ON"

Targets young Aboriginals aged 18 to 24, who deal with urban realities and offers relevant tools that allow them to develop a life project.

19 PARTICIPANTS INCLUDING 12 NEW ONES DURING THE YEAR.

KABADU « PORTAGE »

Homework support and preparation for exams.

655 ATTENDANCES OVER 150 HOURS OF HOMEWORK SUPPORT.

CCAY CULTURAL CONNECTION FOR ABORIGINAL YOUTH

**288 YOUNG ADULT PARTICIPANTS
198 ACTIVITIES
5,792 ACCESSES TO THE PROJECT**



COMMUNITY COMPONENT

DO8DEI8IN ELDERS' GROUP "VISITING AND EXCHANGING KNOWLEDGE"

This group meets 3 times a month to practice social and cultural activities. It seeks to end isolation through the sharing of knowledge, and the enhancement and creation of networks.

**37 MEMBERS REGISTERED
656 ATTENDANCES**



PRIZED PROJECTS:

TAMIKI INTER-FRIENDSHIP CENTRE TRIP.



INTERGENERATIONAL HANDICRAFTS WORKSHOP - PRODUCTION OF MITTENS



MEET-AND-GREET SESSIONS (CAFÉS-RENCONTRES)

FOUR TIMES A MONTH

772 ATTENDANCES

AVERAGE ATTENDANCE OF 19 PEOPLE PER EVENT.



WABA MISKWA OPON PROJECT

"PINK LUNGS"

SUPPORT AND ACCOMPANIMENT GROUP TO HELP PEOPLE QUIT SMOKING.

12 REGISTRATIONS, OF WHICH 5 STOPPED SMOKING.



THE JOY OF GETTING TOGETHER TO CELEBRATE!



SOCIAL DEVELOPMENT SECTOR

The Social Development sector has the mandate of contributing to the self-realization and wellness of individuals in the Aboriginal community by offering psycho-educational and psychosocial services allowing them to create balance in the soul, body, mind and heart (holistic approach), favouring the recognition and development of capacities, skills and competencies (empowerment).



CHILDHOOD AND FAMILY COMPONENT

THE ABORIGINAL HEADSTART PROGRAM

favours the healthy development of children and supports extended families in the reinforcement of parental skills. Our team provided services to 72 children aged 0 to 5 and their families during the year.



ELDER'S COMPONENT

THE MINO PIMADIZIWIN PROJECT

"AT PEACE WITH LIFE: PAST, PRESENT AND FUTURE"

is intended to support and accompany former Indian residential school students and their family members in a healing process or a settlement process for damages. Our team supported and accompanied 145 different individuals in their respective processes for a total of 1,781 interventions.



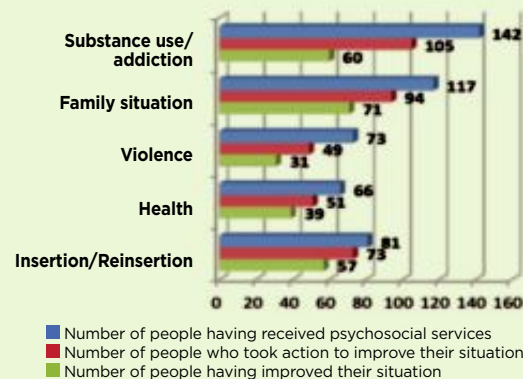
YOUTH/ ADULT COMPONENT

THE EAGLE'S NEST PSYCHOSOCIAL INTERVENTION SERVICE

seeks to improve living conditions of Aboriginals in Val-d'Or (namely those who are homeless, residentially unstable, or risk becoming so) through culturally-adapted prevention and psychosocial services. Our team made 6,720 interventions with 484 different individuals during the year.

An evaluation conducted with 196 intervention service users produced the following results:

Improvement of the situation of Eagle's Nest service users in 2011-2012



Increase in housing stability for Eagle's Nest service users



THE PIBAMADZI PROJECT

"WALKING AT THE ENVIRONMENT'S PACE"

targets the prevention of HIV/AIDS infections and the support of infected individuals, within a proximity framework. Our team conducted 1,713 prevention and support meetings during the year for people who are infected or who risk infection.



COMMUNITY ECONOMIC DEVELOPMENT SECTOR

The Community Economic Development sector, through its philosophy of social economy, has the mandate of contributing to the collective wealth of the urban Aboriginal community through the creation of jobs, the profitability of its services and the promotion of fair trade.

To favour reconciliation, financial independence and service continuity, the Val-d'Or Native Friendship Centre welcomes Aboriginals and non-Aboriginals.

THE REVENUE GENERATED BY THE SALE OF PRODUCTS AND SERVICES STEMMING FROM THE COMMUNITY ECONOMIC DEVELOPMENT SECTOR ANNUALLY REPRESENTS ALMOST \$960,000.

EMPLOYEES

Every day, about twenty employees contribute to the success of our mission, by offering their talents to serve the community. Thanks to their commitment and involvement, services are offered 7 days a week.

80% OF THEM ARE ABORIGINAL.



FOOD SERVICE

Every day our food service offers healthy cuisine, made up of varied, balanced and affordable menus. You are sure to be charmed by the friendly atmosphere of our cafeteria.

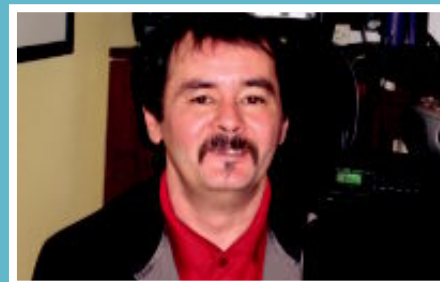
With its 70 places, the Centre's cafeteria served 49,200 meals over the last year, and also 38,500 snacks to the children of the Abinodjic-Miguam Early Childhood Centre and other Friendship Centre programs. This catering service will need to grow.

In its vision of the future, the food service seeks to create skills development opportunities for young Aboriginals to increase their employability and bring them closer to the job market.



LODGING

The Val-d'Or Native Friendship Centre is a unique site for cultural anchoring. With its **24 ROOMS**, single or family-sized, the lodging service can accommodate up to **54 PEOPLE**. In 2011-2012, our **OCCUPATION RATE REACHED 71%**, for a total of **12,713 NIGHTS**. These figures say a lot about the importance of this service for Aboriginals passing through Val-d'Or.



SOCIAL CONSCIOUSNESS

We emphasize the promotion of fair trade and responsible consumption. All the cleaning and maintenance products used are environmentally-friendly. The employees and clientele are also inclined towards eco-responsible behaviour.



ARTS AND CRAFTS BOUTIQUE

The arts and crafts boutique showcases the talent and creativity of regional Aboriginal artists, through genuine and exclusive works: gift ideas, souvenirs, something for all tastes at affordable prices. Here you will find the very essence of Aboriginal culture.



SOCIAL ECONOMY IS GAINING MOMENTUM

Convinced that social economy is an important source of economic leverage for the communities, the Friendship Centre takes an active part in this social innovation movement.

- Participation in the International Forum on Social Economy and Solidarity held in Montreal.
- Participation in the Anicinape Kicikan pre-forum and in the days of reflection on social economy organized by the RCAAQ.





1272, 7th Street, Val-d'Or (Quebec) J9P 6W6

Phone: 819 825-6857 • Fax: 819 825-7515
info@caavd.ca

www.caavd.ca



Printed on 100% post-consumer fiber.
Processed Chlorine Free, manufactured using biogas energy